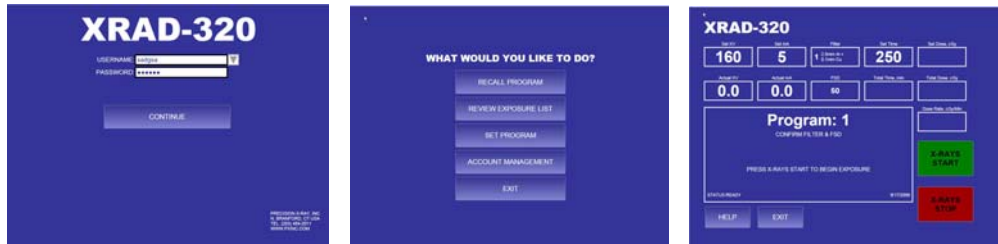


MULTI-USER INTERFACE



The **TouchMate** Operators Control Console is a password protected graphical user interface that limits each user to their assigned rights of system operation. All exposure parameters can be recalled or stored based on a users granted rights, and a transportable database allows each user's operating history to be reviewed for billing or time studies. Each user is assigned a login name and password and granted specific access rights by the facility super-user(s).

DOSE MEASUREMENT



The PTW UNIDOS E is an easy to use dosimeter that accurately displays the measured values of dose and dose rate in Gy, R, Gy/min, R/min. The 0.6 cm³ PTW Farmer chamber and 10 meter extension cable allow direct measurement of the delivered dose at any chosen location, thereby more accurately determining delivered dose.

DOSE MEASUREMENT & CONTROL



The Dose Measurement & Control system allows users to specify the actual dose (in cGy) to be delivered at a known distance, and automatically terminate the exposure when the dose has been determined. Measurement of relative dose is accomplished using a PTW 7862 parallel plate transmission chamber located near the X-ray source. A health physicist may calibrate specific beam qualities to limit user error.

ADJUSTABLE COLLIMATOR (X-RAD 320 ONLY)



The Adjustable Collimator is a motorized 4-leaf X-ray field diaphragm that allows users to quickly define a rectangular or square exposure field from less than 1x1 cm to 20x20 cm at 50 cm FSD. A coincident light field illuminates the irradiation field for precise sample placement.

FIXED BEAM COLLIMATORS



Standard or customized fixed orifice collimators can be provided that precisely define the irradiation field. Standard sizes range from less than 0.5 cm diameter to 30cm diameter, and specialized shapes are available spinal or cranial irradiation.

MOTORIZED SAMPLE SHELF (X-RAD 320 ONLY)



This key activated specimen shelf allows users to quickly set up exposures without the need for manually moving a shelf or placing buildup media underneath. This option replaces the fixed height specimen shelf inside the X-RAD320 Cabinet. An FSD indicator clearly identifies the table height for exact and repeatable treatment distances.

SPECIMEN TURNTABLE



This motorized unit has a sturdy 290 cm platter rotating at 4 rpm to more uniformly irradiate specimens. 120/240 VAC.

X-RAD OPTIONS & ACCESSORIES

MOUSE RESTRAINERS & SHIELDING



Pie Cages for Total Body Irradiaion and Shielded Restraining Fixtures for Partial Body Irradiation are available. Lead shields for mouse restraints are manufactured for numerous applications including flank, spine, abdomen, or head exposure. Customized shielding and fixtures are easily manufactured.

BEAM FILTERS



Additional X-Ray beam filters can be configured for specific HVL or Radiation Quality requirements.

CUSTOM CABINETS, ROOMS, IMAGING SYSTEMS & MANIPULATORS



Precision X-ray custom manufactures cabinets and systems for specialized applications including CT imaging, Image Guided Irradiation, and free standing rooms. Contact our Sales Department for further information.