



Shielded Cabinet Specimen Radiography Systems Model INSIGHT 40

Specimen Radiography System for Science and Research

Compact, Versatile Radiation Shielded Cabinet X-ray System
For Convenient Specimen Radiography



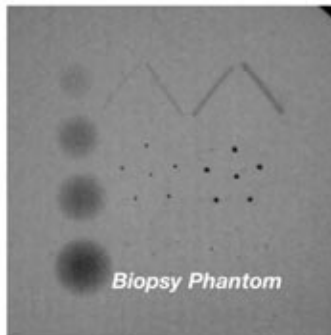
The **INSIGHT 40SM** is a self-contained shielded cabinet x-ray system designed to meet imaging requirements of various specimen radiography applications in Science and Research. These include, but are not limited to:



- **Animal (Laboratory)** • **Agriculture** • **Biology**
- **Orthopedics** • **Botany** • **Forestry** • **Granaries**

With its micro focal spot X-ray source and variable high voltage, the **INSIGHT 40SM**

provides exceptional resolution, high contrast x-ray images, using various radiographic film, or digitally with the **INSTANTVIEWSM** digital imaging options.



Biopsy Phantom

The small focal spot x-ray source and adjustable sample positioning capability of the **INSIGHT 40SM** provides variable radiographic magnification up to 5X for increased visibility of specimen details with film imaging.

The **INSIGHT 40SM** is simple to operate. Its compact size, low weight, and standard AC power requirement allow it to be conveniently located and operated in a laboratory or in the field.



Small Animal X-ray

With its complete shielding and other required radiation safety features, the **INSIGHT 40SM** is in full compliance with Federal and State requirements for radiation safety. It does not require licensing and typically, only requires registration with the state in which it is installed.

PXI

INSIGHT 40

SPECIFICATIONS

X-RAY TUBE

- Output Voltage: 8 - 40kV
- Tube Current: 300uA
- Focal Spot: 20 microns
- Window Filtration: 0.005"

POWER REQUIREMENTS

- 90 - 250VAC, 3A, 50/60 HZ

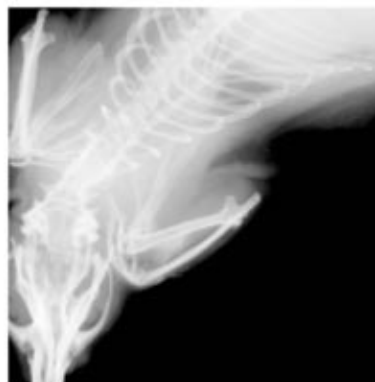
TOUCH SCREEN CONTROL INTERFACE

- Preset and readout of kV in 1kV increments
- Programmable memory of 999 exposures
- Set time: 1 - 999 seconds or constant or automatic exposure control (optional)
- On screen system status read out

CABINET

- Dimensions: 28"H(612mm) x 22.5"W(572mm) x 16"D(406mm)
- Weight: 141lbs(64kg)
- Stainless steel interior
- Adjustable shelf for up to 5X magnification
- Complies with Federal Regulation, 21 CFR 1020.40

Your Sales and Service Representative:



DIGITAL RADIOGRAPHY OPTION

The INSIGHT 40SM digital imaging option and software package, allows optimum viewing of specimen x-ray images without losing the systems ability to use radiographic film.

Choices of four digital panel sizes are available to provide high-resolution x-ray images to suit a wide range of applications. For customers with a film only unit, the INSIGHT 40SM can be field retrofitted with the digital imaging option eliminating the need to return the unit to the factory for the upgrade.

SPECIFICATIONS

- Panel sizes (Image field of view)
 - 2" x 2" (50mm x 50mm)
 - 2" x 4" (50mm x 100mm)
 - 4" x 4" (100mm x 100mm)
 - 8" x 10" (200mm x 250mm)
- Resolution - contact mode: 10 lp/mm
- Resolution - w/geometric magnification: 14 lp/mm
- Optimum image processing software
- Automatic exposure control
- PC with high-resolution flat panel monitor 19"(477mm)

Precision X-Ray, Inc.

15 Commerce Street, Unit 1
North Branford, CT USA 06471
Telephone: (203) 484-2011. Fax: (203) 484-2012
Email: sales@pxinc.com